

角号	定义	颜色 COLOR	线径 WIRE GAUGE	角号	定义	颜色 COLOR	线径 WIRE GAUGE
PIN FUNCTION				PIN FUNCTION			
1	24V	RED 红色		10	GNV	BLK 黑色	
2	NC			11	NC		
3	CANH	LT GR 浅绿色		12	CANL	LBL 浅蓝色	
4	CANL	PUR 紫色		13	CANL	WTR 灰白色	
5	485A	GRY 灰色	28AWG	14	485B	WHI 白色	28AWG
6	485A	YEL 黄色		15	485B	GRN 绿色	
7	0UT1+	VI 紫色		16	CNMO	OG 橙色	
8	CNMI	WTR 白棕		17	D11	WH/BD 白红	
9	NC			18	D12	WH/OG 白橙	

Pin2





Pin0

Pin8

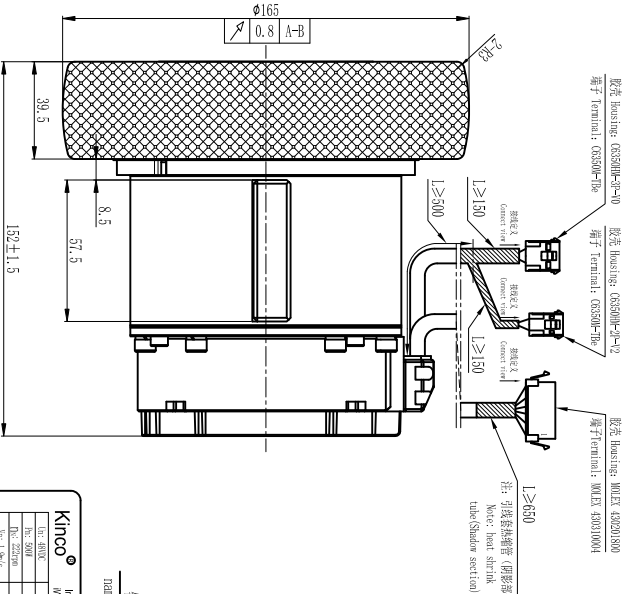
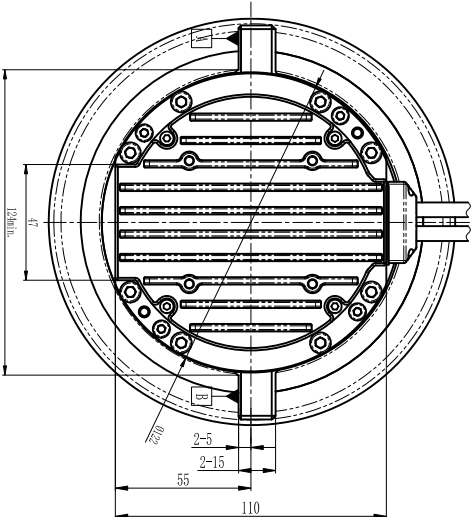
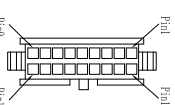
28AWG

欧辰 Electronics 0492021800

端子Terminal: M4.5 430310004

插件	定义	线径	插件1	插件2	
CONNECTOR	FUNCTION	WIRE GAUGE	CONNECTOR 1	CONNECTOR 2	
1	48Y+	RED 红色	 P1-3 P1-4	 P1-2 P1-3	
	2	NC			
	3	48Y-			BLK 黑色
	1	RB+			BLK 黑色
2	RB-	BLK 黑色	 P1-2 P1-3	 P1-2 P1-3	
3	RB+	BLK 黑色			
1	RD+	RED 红色			
2	RD-	RED 红色			
		(11) 2			

(V1.3) 动力线 Power Wire



(11.3) 减速机参数 Gear Box Data	
速比 Gear ratio i:1	9
容许平均输出扭矩 Permissible average output torque (N.m)	30
容许最大输出扭矩 Maximum allowable output torque (N.m)	60
平均输入/回传转速 Average input speed (rpm)	3000
最高输入/回传转速 Maximum input speed (rpm)	6000
容许径向负载 Max. radial force Fr (N)	3000
容许轴向负载 Max. axial force Fa (N)	1000
效率 Efficiency	≥85%
背隙精度 Backlap accuracy	≤12 arcmin

### VI.3 减速机参数 Gear Box Data

## VI.3 技术参数 Technical Data

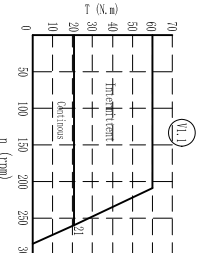
动力电源 Power (V)	48
逻辑电源 Logic power (V)	24
额定转矩 Rated speed (rpm)	21
峰值扭矩 Maximum torque (N.m)	60
轮径 Wheel diameter (mm)	165
轮宽 Wheel width (mm)	50
额定线速度 Rated linear speed (m/s)	1.9
输入输出 Input/output	2x1 倍

**Kinco**® Integrated Servo Motor  
 MMC-00A9-0222A-16S-MA0T

Len: 490C	Inv: 16L
Pos: 200T	Inv: 20W
Pos: 22270B	Inv: F
Inv: 1.9K/s	IP51

Kinco Electric (Shenzhen) Ltd.  
 MADE IN CHINA  
 SN: S13A37DXY0000NNN



备注: V1.1 V1.3

1、胶轮材质：聚氨酯（防静电）；硬度：Shore 85A±2；

材质拉伸强度:  $\geq 35\text{MPa}$ ; 断裂伸长率:  $\geq 450\%$ ;

撕裂强度:  $\geq 73\text{ kN/m}$ ; 工作温度:  $-50\sim 80^{\circ}\text{C}$  (仅轮毂);

wheel material: polyurethane (anti static); hardness: Shore

Material tensile strength:  $\geq 40\text{MPa}$ ; Elongation at break:

Tear strength:  $\geq 105\text{ kN/m}$ ; Working temperature:  $-50\sim 80\text{ }^{\circ}\text{C}$ ;

2、电机噪音: 65dB (A) (0.1m, 2500rpm), 且不得有明显杂音、异音;

Motor noise: 65dB (A) (@ 1m, 2500rpm); and there should be no

Obvious noise and abnormal sound;

VER		DESCRIPTION OF CHANGE		SL		2024-04-19		DESIGN		DATE		P/NO.		3070900055S	
VER.1		增加T~N曲线及备注，更改线色，详见图纸		ECN.10063		LSJ		LSJ		2022-11-15		TITLE		Outside Drawing	
VER.2		增加电机重量；修正端子序号；详见图纸		VER		ECN NO.		CHANGE		APPROVE		CHECK		USDD ON	
VER.3		中文说明改为中英双语言说明；详见图纸		FINAL TOLERANCE REFERENCE:		GB/T 1804-m		Unit:mm		WTD		2022-11-15		iTIME10400-02222-A165-M007	
				LINER						APPROVE				SCALE:	
				≤6		±0.1		>6~30		±0.2					
				>30~120		±0.3		>120~400		±0.5					
								FIRST ANGLE PROJECTION		SHEET 1 OF 1				KINCO	